

7th Romanian Tzuica Tourney

Judges: Vlaicu Crişan & Eric Huber (Romania)

Theme

Help-selfmates (**hs#n**) or help-selfstalemates (**hs=n**) with **Batteries**. All fairy conditions and pieces are allowed.

There must be at least two active (firing) batteries during each solution. Batteries can be already present in the diagram position or built during the play; they can be both white, both black or black & white.

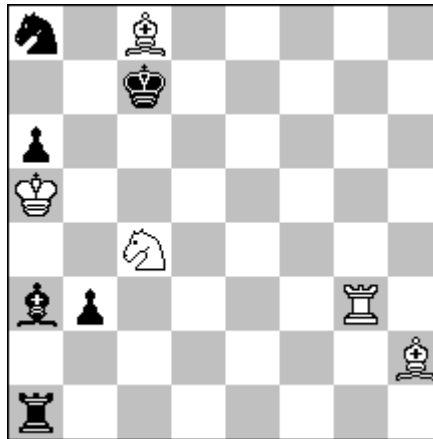
Definition

In a **help-selfmate** problem in 'n' moves (denoted **hs#n**), White starts and Black collaborates with White in order to reach a position of **s#1** (selfmate in one move) at move 'n' (the last move).

Battery

A battery is an arrangement of two pieces capable of giving a discovered check.

Vlaicu Crişan & Eric Huber Rio de Janeiro 2009



hs#2 (5+6)

b) wSc4→f8

a) 1.Rc3+ Kc6 2.Se3+ Bc5#

b) 1.Rg8+ Kd8 2.Sg6+ Bf8#

There are two pre-existing batteries **wBh2-wRg3** and **bRa1-bBa3** in the diagram position. White builds another battery **wR-wS** during each solution.

Prizes in bottles of Tzuica.

Send your entries to Eric Huber by email at hubereric@yahoo.fr by October 9th or give them during congress to Vlaicu Crişan until Wednesday, October 14th at 19:00.