

52nd WORLD CONGRESS OF CHESS COMPOSITION

Rio de Janeiro, Brasil, 10-17 October 2009

Congress Long Composing Tourney

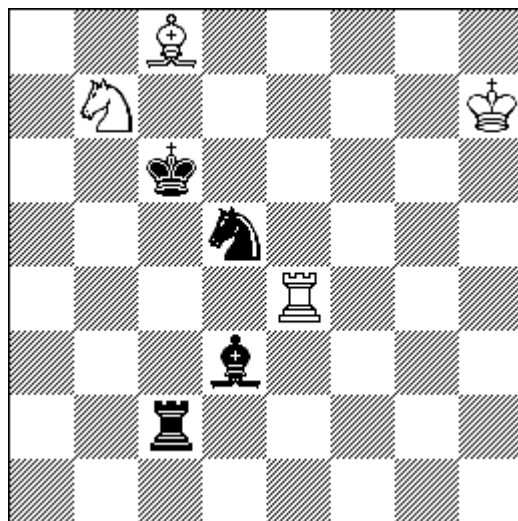
Helpmates in 2 moves

Judges: Jorge Kapros and Jorge Lois (Argentina)

Theme: In a phase, a black piece A opens a line to a white piece B, in another phase the same black piece A opens another line to the same white piece B. In the example below the white piece moves across the opened line, but that's is not a requirement.

No fairy pieces and/or conditions, with at least two phases. Multi-solutions and twins are allowed, but no zeroposition.

Example



H#2 2.1.1.1

Solutions

1. Bb5 Rd4 2. Sc7 Rd6#

1. Bc4 Re5 2. Sb6 Rc5#

Entries must be delivered in hand to Jorge Kapros or Jorge Lois by October the 14th at 20:00 hs