

52nd WORLD CONGRESS OF CHESS COMPOSITION

Rio de Janeiro, Brasil, 10-17 October 2009

Congress Quick Composing Tourney

Section A: Direct mates in 2 moves

Judges: Vlaicu CRISAN & Dinu-loan NICULA (Romania)

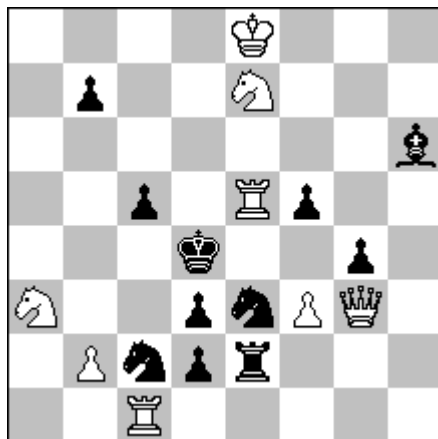
Theme #2: In the try a white piece X captures a black piece Y, threatening mate A. Black has at least two defenses: capture of the white piece X, followed by mate B or flight of the black King followed by mate C.

In the real play, after the key the mates B and C should appear after random or correction moves of black piece Y.

Example

Vlaicu CRISAN & Virgil NESTORESCU

Buletin Problemistic 1999, 1st Prize



(8 + 11)

v #2

Try: **1.Rxe3?** [2.Qe5(A)#]

Thematical variations:

1...Rxe3/Bxe3 2.Qd6(B)# - capture of piece X

1...Kxe3 2.Sxf5(C)# - flight

1...Sxe3 2.Sb5(D)#

but 1...f4!

Key: **1.Re6!** [2.Qe5(A)#]

1...Se3~ 2.Qd6(B)# - random move of piece X

1...Sd5! 2.Sxf5(C)# - correction move of piece X

1...Sc4! 2.Sb5(D)#

(1...Bg7/Bf4 2.Qf4#? 1...f4 2.Re4#)

Thematic pieces: X=Re5, Y=Se3.

52nd WORLD CONGRESS OF CHESS COMPOSITION

Rio de Janeiro, Brasil, 10-17 October 2009

Congress Quick Composing Tourney

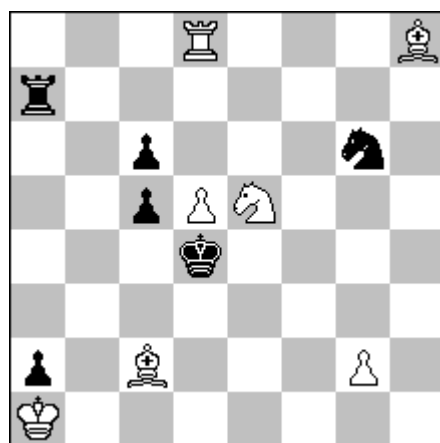
Section B: Help mates in 2 moves

Judges: Vlaicu CRISAN & Dinu-Ioan NICULA (Romania)

Theme h#2: At least two solutions are required. In the first solution, one direct White battery is activated and delivers mate. In the other solution the white battery is destroyed. Twins and duplex are allowed, but no zero-positions.

Example

Vlaicu CRISAN & Ion MURARASU
TeleScacco 2004



(7 + 6)

h#2

4.1.1.1.

First thematic pair of solutions:

1.Ra3 Kb2 2.Re3 dxc6# - Activation of white battery.

1.Rd7 Bf5 2.Kxd5 Rxd7# - Destruction of white battery.

Second thematic pair of solutions:

1.Ra4 Bxg6 2.Rc4 Sg4# - Activation of white battery.

1.Rg7 g3 2.Kxe5 Bxg7# - Destruction of white battery.

Thematic white batteries: Rd8 – pd5 (first pair of solutions) and Bh8 – Se5 (second pair of solutions).