

Rio de Janeiro 2009

12th SABRA Composing Tourney

An orthodox H#2 is required with the following theme:

The square evacuated by Black on the 1st move is immediately occupied by a white piece which subsequently gives mate as the rear piece of a direct white battery.

Restrictions: (a) evacuation on the 1st move by a black pawn is not allowed, and (b) a double-check on the mating move is not allowed.

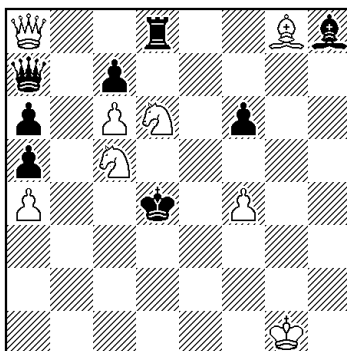
Judge: Menachem Witztum

Prize: 1 bottle of **SABRA** - *the liqueur of Israel for your enjoyment.*

Entries should be submitted to Roberto Stelling (xadrez@stelling.cc) until Wednesday 14/10/2009 at 19:00.

Example:

Menachem Witztum



H#2 b) -Pc7 (C+) (8+8)

a) 1. Rd8-e8 Qa8-d8 2. Re8-e3 Sd6-e4#

b) 1. Qa7-h7 Qa8-a7 2. Qh7-d3 Sc5-e4#