

Champagne Tourney Rio 2009

The Tourney is opened only to Congress Participants

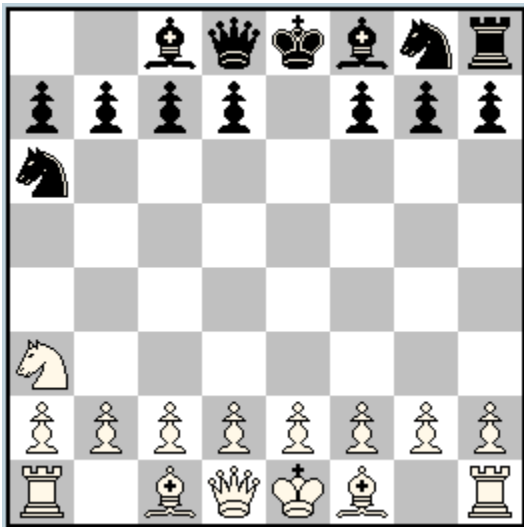
The Champagne Tourney is declined in 2 sections (with separate awards) :

A . ProofGames B. Any other kind of Retro problems

The theme is : The repeated move!

(it is specially selected to celebrate an echo move played in Jurmala then Copenhagen...).

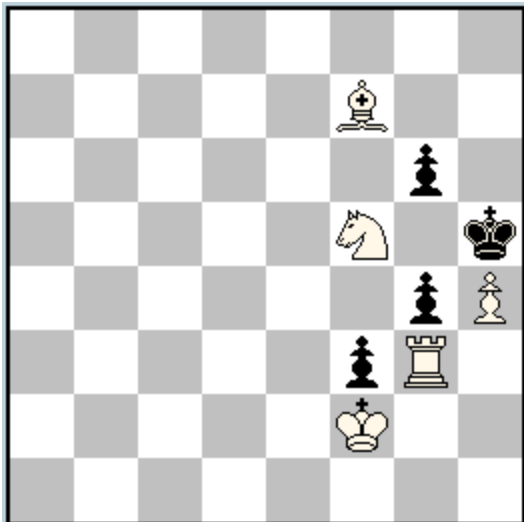
Example A : Kaibun Oda, 1st HM, Champagne Tourney, Tel Aviv 1996



SPG 5,0 (15+14) C+

1. Sf3 e5 2. Sx05 Sb8-a6 (the move - Jurmala) 3. Sc6 Tb8 4. Sxb8 Sxb8 5. Sa3 Sb8-a6 (the repeated move - Copenhagen)

Example B : Thomas R. Dawson, The Chess Amateur 1920



White retracts 1 move, then mates in 2 (5+4)

White retracts -1.h2-h4 (the move - Jurmala) then plays 1.h2-h4! (the repeated move - Copenhagen)gxh3 e.p. 2.Lxg6#

In the examples, the move is played twice by the same piece but this is not necessary (for example Sb8-a6 then Sg8 to b8 playing Sb8-a6 is accepted).

Fairy conditions allowed in both sections.

Maximum 3 entries per composer per section.

Maximum 1 non computer tested entry per composer in section A

Entries to Michel Caillaud by 14th October 9:00 PM